

VERSALIFT

VTL135-F

Chassis mounted
telescopic platform



Available for class B
driving licence



LMC controls with
variable outreach



Emergency lowering
controls at the pedestal



Turret tailswing within
the mirrors



1 kV certified low
voltage insulation



VERSALIFT

A **TIME** MANUFACTURING COMPANY

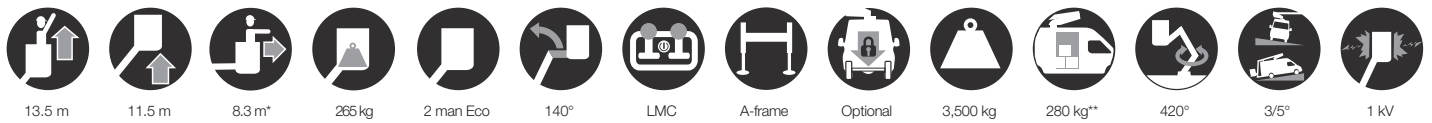
VTL135-F - Mercedes-Benz Sprinter



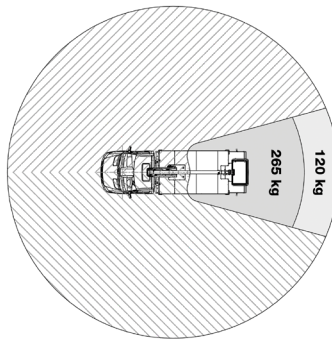
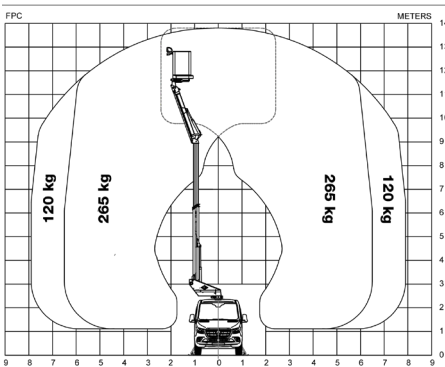
Manufactured from 1.5mm thick ultra-high strength steel

Added stability delivering smooth and steady working conditions

■ Length: 7,025 mm ■ Height: 3,200 mm ■ Wheelbase: 3,665 mm



Diagramme(s)



Options

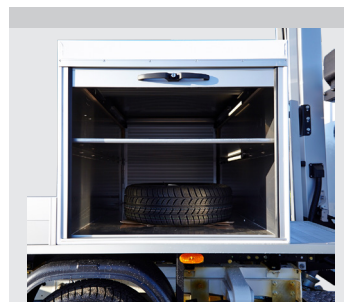
- Outrigger pads with holders
- Hydraulic axle locking system
- Cabinet for the chassis
- Sideboards for the chassis
- Bucket rotator (2 x 90°)
- Drive option (drive the vehicle with raised platform)
- Display in the upper control panel
- Stow guide & limited working area without outriggers



The shaped profile ultra high strength steel booms provide improved rigidity, stiffness and performance



Ground level emergency lowering from the chassis (pedestal mounted valve bank)



Cabinet for the chassis (optional)



LMC (Load Moment Controls): Variable outreach and up to 2 actions at a time (1 per joystick)

Notes

Technical information is subject to change without prior notice. Images may show optional equipment. Installations and/or options may not be available in your specific region.

* Depending on the vehicle.

** Max payload with a driver, a passenger and a full tank of fuel (220 kg added to the installation weight).

*** Reduced outreach. May require axle lock.

**** Requires a display in the control panel and the option "Limited working area without outriggers".

Distributor

Versalift International
Soendervang 3, 9640 Farsøe
Denmark

+45 9863 2433
sales@versalift.dk
versaliftinternational.com