

# VERSALIFT

## VTX240

Chassis mounted  
platform with two  
3-stage telescopic  
booms



Reach worksites up  
and over obstacles



Reach worksites below  
the vehicle



Automatic setup and  
packing



Available for class B  
driving licence



2 x 90° bucket rotation



# VERSALIFT

A **TIME** MANUFACTURING COMPANY

# VTX240 - Iveco Daily

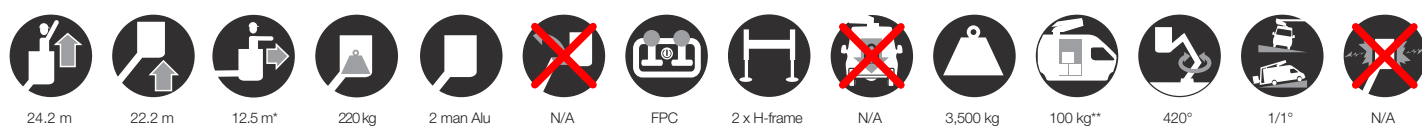


All high strength steel structure

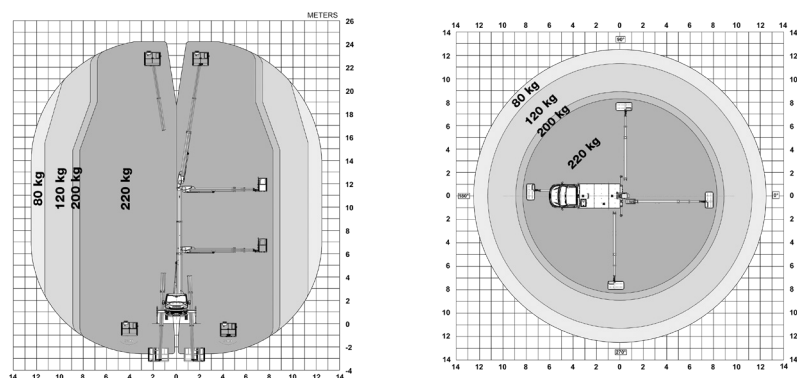
Rigid structure (doesn't flex as much as similar competitor machines)

Very low transport height

■ Length: 7,590 mm ■ Height: 2,230 mm ■ Wheelbase: 4,100 mm

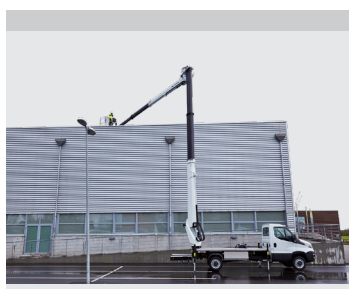


## Diagramme(s)

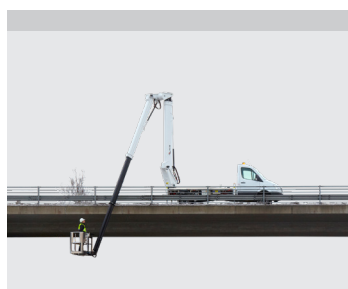


## Options

Outrigger pads with holders  
 Safety stripes (red/white)  
 Flashing lights on the vehicle  
 Demo seat covers and floor mats  
 Safety lanyard and harness



'Up and over' reach: 11 metres up and 12.5 metres out



Ability to work below ground level (-3,3 meters)



6 cm ground clearance below the end mounted aluminium basket



FPC (Full Proportional CANbus): Variable outreach, up to 4 simultaneous actions and home function

## Notes

Technical information is subject to change without prior notice. Images may show optional equipment. Installations and/or options may not be available in your specific region.

\* Depending on the vehicle.

\*\* Max payload with a driver, a passenger and a full tank of fuel (220 kg added to the installation weight).

## Distributor

**Versalift International**  
 Soendervang 3, 9640 Farsoe  
 Denmark

+45 9863 2433  
 sales@versalift.dk  
 versaliftinternational.com