

VERSALIFT

VT54-190-F

Chassis mounted
telescopic platform



PTO driven hydraulic pump



FPC controls with up to 4 actions at a time



Turret tailswing within the mirrors



Outriggers within the mirrors



1 kV certified low voltage insulation



VERSALIFT

A **TIME** MANUFACTURING COMPANY

VT54-190-F - Renault D14



Features the sturdiest boom design available

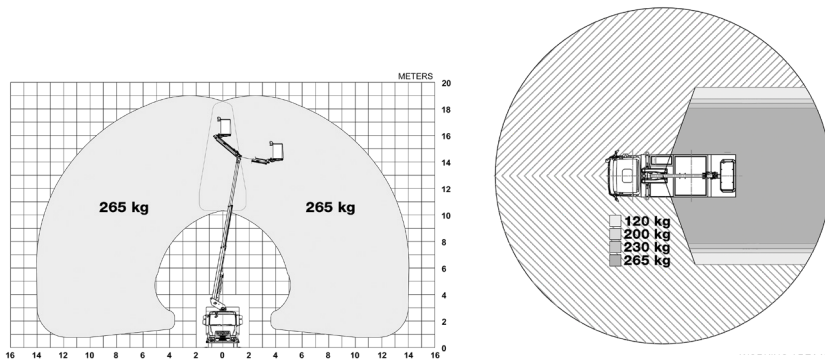
A vast list of optional equipment is available, allowing you to customize the VT to meet your specific demands.

The Smartbox toolbox solution is available in many shapes and sizes.

■ Length: 7,130 mm ■ Height: 3,800 mm ■ Wheelbase: 3,500 mm



Diagramme(s)



Options

- Workshop module for the chassis
- Workshop interior
- LED ceiling lights in the workshop module
- Bucket rotator (2 x 60°)
- Outrigger pads with holders
- Power pack
- Removable LED spotlight
- Home function & limited working area without outriggers



Workshop module for the chassis (optional)



Workshop interior (optional)



Turret/knuckle tail swing and outriggers within the mirrors



FPC (Full Proportional CANbus controls): Up to 4 simultaneous actions (2 per joystick)

Notes

Technical information is subject to change without prior notice. Images may show optional equipment. Installations and/or options may not be available in your specific region.

* Depending on the vehicle.

** Max payload with a driver, a passenger and a full tank of fuel (260 kg added to the installation weight).

*** Reduced outreach and max 230 kg bucket capacity.

Distributor

Versalift International
Soendervang 3, 9640 Farsøe
Denmark

+45 9863 2433
sales@versalift.dk
versaliftinternational.com