

# Technical data

# LEO 12T

**TEUPEN**<sup>®</sup>  
...access redefined

since '77

## PERFORMANCE

Working height, max.	12,00 m
Platform height, max.	10,00 m
Horizontal outreach, max. (120 kg)	8,45 m
Platform capacity, max.	120 kg
Jib, movable	-
Turntable rotation, max.	220 °
Track drive, height- and width-adjustable	-
Gradeability, max.	8,5 ° / 15,0 %
Slope angle, max.	8,5 ° / 15,0 %
Travel speed, max.	1,2 km/h

## MEASUREMENTS\*

Platform (height) (A)	1,10 m
Platform (length) (B)	0,90 m
Platform (width) (C)	0,80 m
Length (D)	4,75 m
Length without platform (E)	2,80 m
Height (F)	1,99 m
Width, min. (G)	1,76 m
Track (length x width) (H)	2,20 x 0,25 m

## WEIGHT\*

Total weight	2985 kg
Live load in travelling position	4,15 kN/m <sup>2</sup>
Live load in working position	4,15 kN/m <sup>2</sup>

## POWER SOURCES

Standard power sources:

■ Battery drive	(24 V, 450 Ah, 4,5 kW)
-----------------	------------------------

Optional power sources:

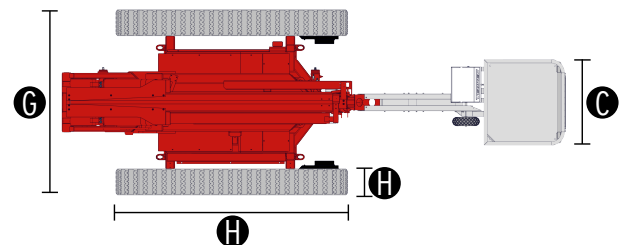
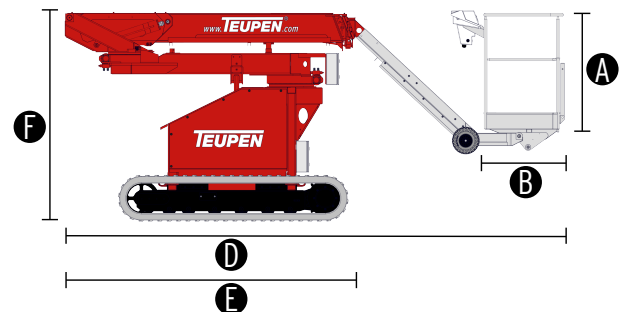
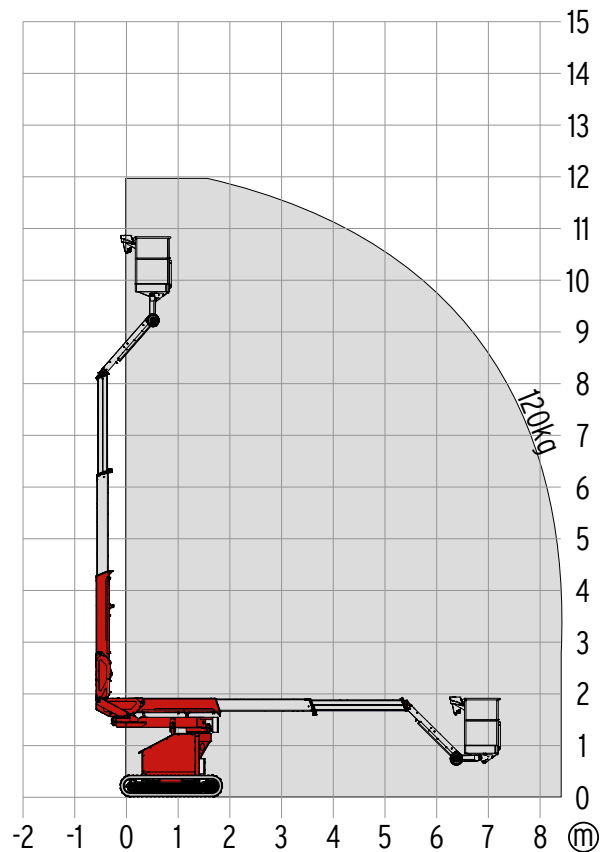
■ Electric motor	(230 V, 12,9 A, 2,2 kW)
■ Combustion engine (petrol)	Honda GX390 (9,6 kW / 12,8 hp)
■ Combustion engine (Diesel)	Kubota Z602 (10,8 kW / 14,5 hp)

Fuel tank capacity (petrol engine)	6,5 l
------------------------------------	-------

Fuel tank capacity (Diesel engine)	13,0 l
------------------------------------	--------

## POWER SUPPLY

Electric current, max.	230 V / 16 A
------------------------	--------------



## STANDARDS

2006/42/EG-Machinery directive  
(Harmonised standard EN280:2001 + A2:2009); 2004/108/EG (EMV)  
2000/14/EG (Noise emission directive)

\* The technical data may deviate +/- 3 % from the specified values.  
\* Weight and dimensions may vary depending on options and accessories.

## CHASSIS

- Powerful track drive with hydraulic braking system
- Precise manoeuvring via sensitive remote control
- White, non-marking rubber tracks with specially arranged profile for optimal grip

## BOOM SYSTEM

- Boom system made of steel and aluminium components for better performance parameters with maximum stability
- All functions available via removable remote control
- Turntable rotation via high-performance slewing ring, worm gear and hydraulic motor
- Detachable platform
- Double turntable rotation device for more flexibility while working in facilities
- Compact machine measurements for optimal manoeuvrability

## POWER SOURCE

- 24 V battery drive including charging device

## PRODUCTIVITY, SAFETY, QUALITY

- Hydraulic emergency lowering via hand pump
- Power socket in the platform (110 V / 16 A)
- Detachable platform, including attachment point for safety harnesses
- Drive operation without platform possible
- Hydraulic system filled with biodegradable hydraulic oil
- High-quality paint in RAL 3020 (red)
  - Hydraulic cylinders in RAL 9006 (grey)
- Unlockable check valves located directly on hydraulic cylinders
- Possible to be lifted in goods elevator
- Easily removable covers for optimal accessibility
- Hour meter
- Fuzzy control technology

## OPTIONS\*

- Petrol engine Honda GX390 (9,6 kW / 12,8 hp)
- Diesel engine Kubota Z602 (10,8 kW / 14,5 hp)
- Electric motor (230 V, 12,9 A, 2,2 kW)
- Custom paintwork, one colour, according to RAL scheme
  - (except metallic coatings, signal- or special colours)
- Custom paintwork, two colours, according to RAL scheme
  - (except metallic coatings, signal- or special colours)

## ACCESSORIES\*

- Safety harness
- Track mat (2000 x 800 x 15 mm)

## CONTACT

**TEUPEN Maschinenbau GmbH**  
Marie-Curie-Str.13  
48599 Gronau  
Germany

Phone +49 2562 8161-0  
Fax +49 2562 8161-888  
E-mail mail@teupen.com

\* Weight and dimensions may vary depending on options and accessories.

Product specifications are subject to change without notice or obligation. Photographs and drawings in this document are for illustrative purposes only. Refer to the appropriate Operator's Manual for instructions on the proper use of this equipment. Failure to follow the appropriate Operator's Manual when using our equipment or to otherwise act irresponsibly may result in serious injury or death. The only warranty applicable to our equipment is the standard written warranty applicable to the particular product and sale and we make no other warranty, expressed or implied. Products and services listed may be trademarks, service marks or trade-names of TEUPEN Maschinenbau GmbH and/or its subsidiaries in the U.S.A. and many other countries. "TEUPEN", "Access redefined" and "LEO Series" are registered Trademarks of Teupen GmbH in the United States of America and many other countries. © 2018 TEUPEN Maschinenbau GmbH.



2019-A\_en\_GB